



Curious Ape Mushrooms

GROW TENT MANUAL





Curious Ape
Mushrooms

HYDROPONIC MUSHROOM GROW TENT

Product by Curious Ape Mushrooms



TABLE OF CONTENTS

Features

4

What You Recieve

5

Choosing The Right Location

6

Assembly Diagram

7

Tent Assembly: 3 Step Guide

8

How To Operate Tent: 2 Phases

10

How To Operate Fan

11

How To Operate Humidifier

12

Operational Saftey & Hazards

13

Conact Us

14



Curious Ape
Mushrooms

OUR TENT PROVIDES

Controlled Air Flow

Proper airflow is critical in mushroom cultivation, as stagnant air can lead to mold, bacterial contamination, and poor fruiting conditions. Our grow tent provides a steady exchange of fresh air which removes excess CO₂ and maintains ideal oxygen levels, supporting vigorous mushroom growth

Optimal Humidity Levels

The humidifier ensures optimal humidity levels for mushroom growth with built-in sensors that regulate moisture inside the tent, minimising the need for frequent misting.

Consistent Yields

Unlike open-air cultivation, where environmental fluctuations can impact yields, our grow tent provides constant controlled humidity levels and air flow which leads to larger, more abundant harvests.

Hands-Free Growing

Our automated mushroom grow tent enables hands-free growing by maintaining ideal environmental conditions without constant manual adjustments.

WHAT YOU **RECIIEVE**

Product	Size	Function
Hydroponic Grow Tent	90cmx90cmx180cm	Contained Environment
Spider Farmer™ Cool Mist Humidifier	6L capacity	Humidity
Spider Farmer™ Inline Ducting Fan	4 Inch	Air Flow
Carbon Filter	4 Inch	Filter Air
Vent Pipe	4 Inch	Connect Fan+ Filter to Tent
Grow Racks	90x30x106cm	Hold Grow Bags
Hygrometer	5cm	Monitor Humidity





CHOOSING THE RIGHT LOCATION

Key factors to consider:

Ambient Lighting & Temperature

During the fruiting stage, the majority of mushroom species benefit from indirect ambient light. This can be provided by opening the tent window vents. Avoid placing the tent in total darkness or direct sunlight, as extreme light exposure and sudden temperature fluctuations can result in stunted mushroom growth. Aim for a location with a stable temperature and moderate indirect lighting.

Air Circulation & Purity

Keep the tent away from areas prone to mold, such as basements with poor ventilation, as well as bathrooms, or spaces with water leaks. Mold spores can easily contaminate the tent. Keep the tent away from areas with dust, chemicals, or pollutants, such as garages, laundry rooms, or areas with smoke exposure. Regularly clean the surrounding area to minimise contamination risks.

Humidity Control

High humidity is essential for mushroom growth, but excessive moisture in the surrounding room can encourage mold and mildew to grow. Ensure proper ventilation to prevent excessive dampness outside the tent.

Flooring Material

Choose a location with a floor that such as tile, concrete, or sealed wood. Carpets can trap moisture and become breeding grounds for mold and bacteria.

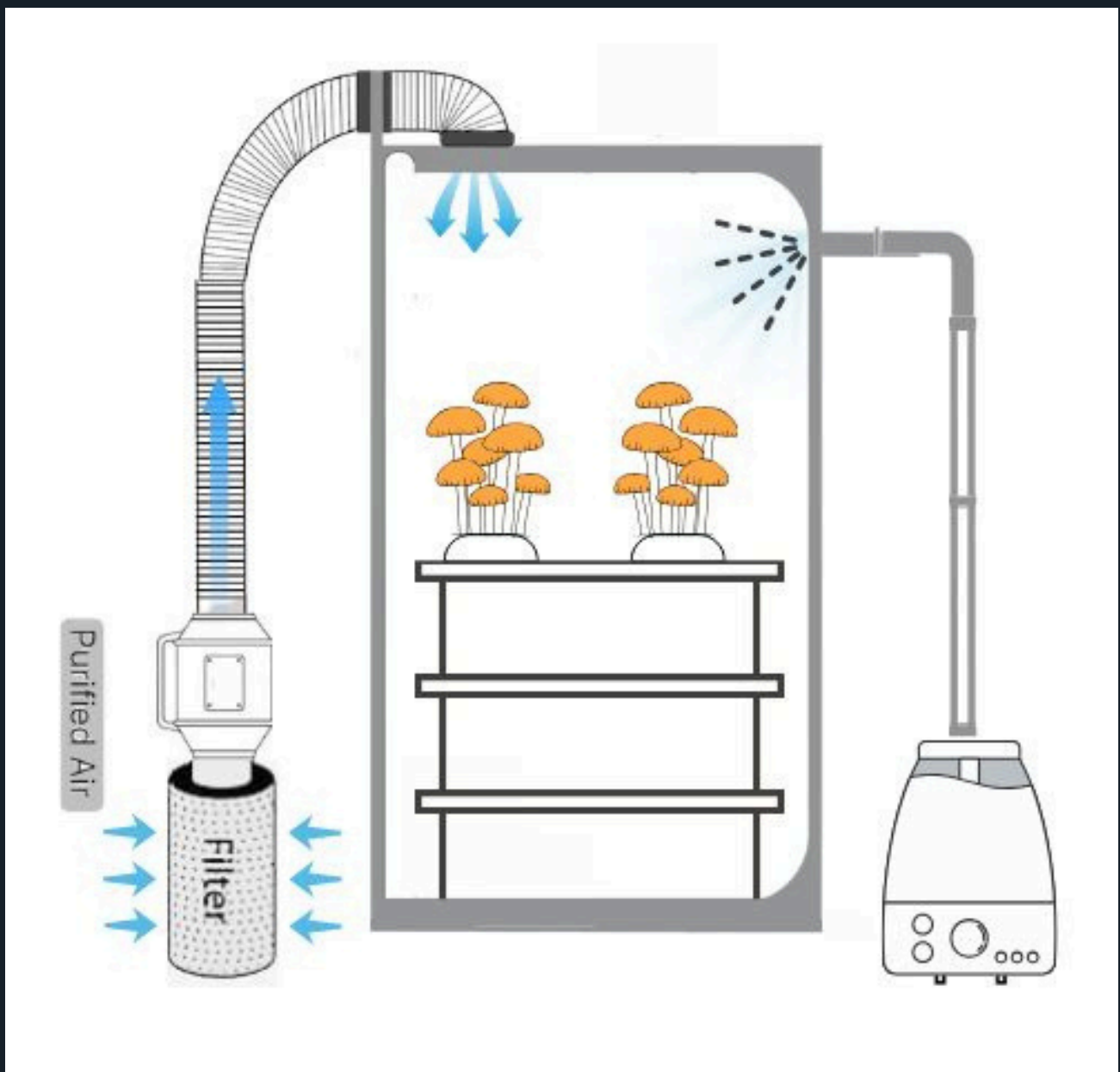
Pest Control

Avoid placing the tent near areas that attract insects, such as kitchens, compost bins, or trash storage. Pests like fungus gnats can harm your mushrooms.





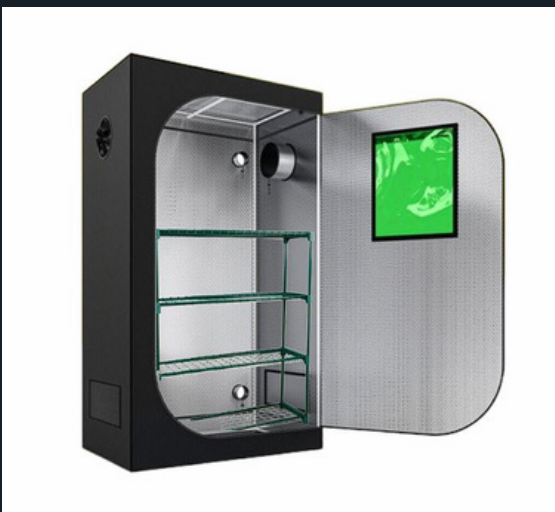
ASSEMBLY DIAGRAM





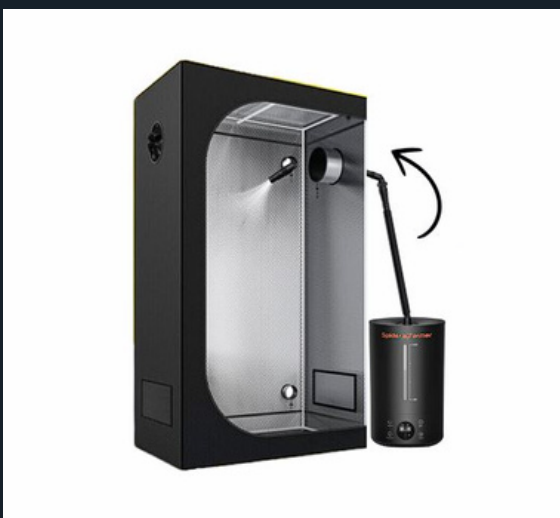
3 STEPS: HOW TO ASSEMBLE GROW TENT

1. BUILD TENT



Construct the grow tent and shelves (optional) by following the enclosed instructions. Place one rack inside your tent.

2. POSITION HUMIDIFIER



Position the Spider Farmer™ Humidifier outside the grow tent on the RIGHT hand side.

Thread the humidifier hose through the upper back-side opening. Fasten the hose securely using the tents adjustment strings.



3. FIT THE FILTER, FAN & DUCT PIPE TOGETHER



Place all components on the right hand side and connect them together in order. Ensure that the fan is facing upward to create positive pressure (air blowing into the tent).

Place hygrometer inside the tent.



Your tent is now complete!

HOW TO OPERATE GROW TENT

There are **two stages** of operation based on the mushroom growth stage (either colonisation or fruiting)

2 STAGES



1. COLONISATION

When your bags or cakes are colonising, there is no need to activate the fan or humidifier.

You can place your colonising bags inside the tent for the added benefit of a contained space and more stable temperatures



2. FRUITING

When your bags are colonised or the top layer of your monotub 90-100% colonised, use the humidifier and fan to provide optimal humidity and airflow levels to facilitate growing conditions. See next page for more details

FRUITING PHASE: FAN OPERATION

Key Functions of an Inline Fan in a Mushroom Grow Tent

An inline fan plays a crucial role in maintaining air circulation within a mushroom grow tent by managing fresh air exchange, humidity levels, and CO₂ removal, which are all essential for healthy mushroom growth.

Removal of CO₂ Buildup – Mushrooms exhale CO₂ as they grow. An inline fan helps exhaust stale air, preventing CO₂ accumulation, which can cause long, stringy stems, furry feet, stunted pins, and discoloured and deformed mushroom fruits.

Maintain Fresh Air Exchange – By pulling in fresh, oxygen-rich air and expelling old air, an inline fan ensures proper gas exchange, which is essential for strong and healthy mushroom development. Proper airflow also prevents excessive humidity pockets that can lead to mold and bacterial contamination.

Optimal Tent Air Pressures

- It's very important to create **positive pressure** (air flowing into the tent) so that the external air is drawn through the bottom carbon mesh filter before it circulates the tent's airspace. By constantly pushing clean, filtered air into the tent, positive pressure prevents outside contaminants (e.g., dust, mold spores, and bacteria) from entering the tent and contaminating the space.
- A steady intake of fresh, oxygen-rich air also promotes healthy mushroom growth by preventing CO₂ buildup, which as mentioned above can cause stunted growth, discoloration and aborted pinning.
- Positive pressure can also ensure consistent air movement, reducing the risk of stagnant pockets where contaminants or excessive CO₂ could accumulate.

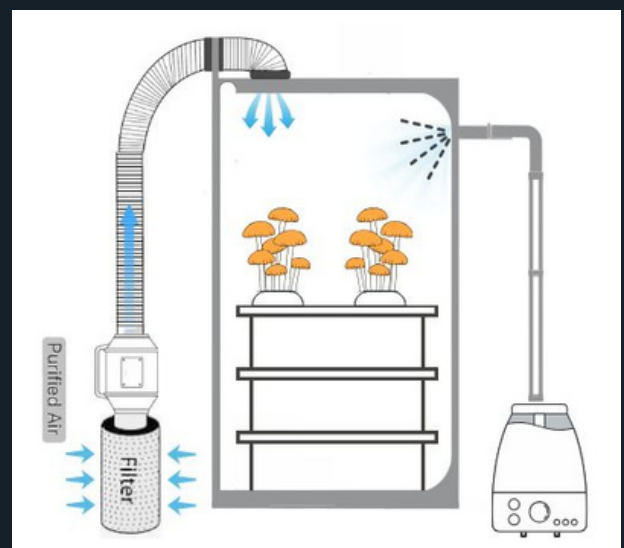
Optimal Operation Times: 2 X DAILY FOR 20 MINUTES

We recommend operating the fan **twice daily for 20 minutes** during the morning and afternoon. Avoid operating the fan for too long as it can dry out your mycelium and mushroom fruiting bodies.

Too Much or Too Little?

Signs that your mushrooms are receiving too much airflow include discoloration, dryness, stunted growth, aborted mushroom pins, reduced tub humidity (minimal droplets) and low humidity reading on the hygrometer (<80%). Signs that too little airflow results in CO₂ build up- the most common sign of this is "furry feet" fluffy mycelium developing on the mushroom stipes (stems).

Mushrooms just like humans expell CO₂ and this must be removed otherwise it stunts mushroom growth. Depending on the specie, furry feet are a common sign where fluffy white mycelium grows at the bottom of the mushroom stipe (stem). discoloration, excess water build up on the top layer, and stunted pins and growth are key signs.



To create positive pressure direct the fan to blow air into the tent

FRUITING PHASE: HUMIDIFIER OPERATION

Key Functions of an Humidifier in a Mushroom Grow Tent

Key Functions of an Humidifier in a Mushroom Grow Tent

The Spider Farmer humidifier features a 6L tank, providing up to 24 hours of continuous humidification. It includes an adjustable timer (1 to 12 hours) for convenient, hands-free operation. The built-in sensor allows you to set a specific humidity level between 35% and 95%, ensuring optimal humidity control for your tent.

Optimal Operation Times: 2 X DAILY FOR 20 MINUTES

We recommend using the Spider Farmer Humidifier twice daily for 20 minutes intervals during the morning and afternoon. Adjust the frequency as necessary based on hygrometer readings. Mushrooms require very high levels of humidity with the optimal humidity for growth being 90-100% humidity. Operating the humidifier for the same time as the Fan - 20 minutes twice daily will be sure to provide your mushrooms with adequate humidity to thrive. Ensure that the Humidifiers 6L tank is filled frequently so it does not run dry and caused damage.

Too Much or Too Little?

Too much humidity results in build up of H2O on the surface of your grow tub or in the grow tent. This can encourage wet-rot and other contamination from forming that are exacerbated in environments with excess water accumulation. Too little humidity can result in your mushroom fruits drying out and stunting or aborting. Key signs are discoloured, darker mushroom caps, and yellowing as well as dried out mycelium and a tub surface layer with minimal droplets.



Spider Farmer Humidifier Features

MUSHROOM GROW TENT SAFETY GUIDELINES

Your safety is our top priority. Please carefully follow the guidelines below to ensure the safe operation of your Mushroom Grow Tent.

- DO NOT leave any electronic equipment operating while unattended.
- Keep ALL electrical equipment outside the grow tent to prevent contact with moisture generated from the humidifier. Water exposure poses a serious fire hazard and can cause damage, rust, and malfunction of electrical components.
- Be vigilant about potential fire hazards and take all necessary precautions to minimize risks.
- Familiarize yourself with the Spider Farmer User Manual to ensure the safe and proper operation of both the humidifier and fan.
- If contamination occurs inside the grow tent, all equipment must be thoroughly cleaned and sterilized with 70% isopropyl alcohol.
- If contamination persists, we strongly recommend replacing the fan and carbon filter, as these components may harbor contaminants that cannot be fully removed.

For any questions or concerns regarding the safe use of your Mushroom Grow Tent, please contact us using the details below.



CONTACT US



Curious Ape
Mushrooms

For any questions relating to the assembly and operation of the Mushroom Grow Tent, please contact us:



+61 402 704 604



curiousapemushrooms@gmail.com



www.curiousapemushrooms.com.au

